

## NEW FORMAT VIDEO LINKS

[www.speedi.tv](http://www.speedi.tv)

December 2022 / January 2023

Issue No: 65



FREE!  
Online  
Magazine

THIS MONTH: Daytona Turkey Run 1 & 2 NSRA Tampa Spruce Creek Toy Parade and Much More



# SPEEDI'S BLOG

**W**ELCOME TO SPEEDI'S Blog.

What a 'roller coaster' of a year 2022 has been . . .

Hopefully the world will come to its senses during the upcoming year, but who knows . . .

The Antonov An-225 Mriya, the world's largest cargo aircraft was destroyed at an airport near Kyiv, Ukraine after Russia withdrew forces from the area. Photo below:



It was also the end of the Boeing 747 after over 50 years of service. For many years the B747 was the world's largest plane. The final model was the 747-8 freighter, and the 747-8 was the world's longest passenger aircraft at 76.4 m long. It will be surpassed by the B777-9

which is presently under development, which has a length of 76.7 m. However, the Mriya was even longer at 84 m.

The world's other largest passenger plane, the Airbus A380, also ended production back in 2021. On 16 December 2021, Emirates received its 123rd A380, which was the 251st and last delivered by Airbus. The \$25 billion investment was not recouped.

I remember seeing NASA's B747 being mated with the retired Space Shuttle Discovery for the very last time at the Kennedy Space Center. It was back in 1982 that the first 'mating' took place. Below is a NASA photo of the Space Shuttle



orbiter Challenger atop NASA's Boeing 747 Shuttle Carrier Aircraft (SCA), NASA 905, after leaving the Dryden Flight Research Center, Edwards, CA, on July 4, 1982 for the ferry flight that took the orbiter to the Kennedy Space Center in Florida for its first launch.

Below are some Boeing photos of the very last B747-8 being moved from the production line prior to delivery to Atlas Air in 2023.



Of course US based B747 freighters have been used extensively alongside military aircraft to transport a wide variety of cargo into Poland in support of Ukraine. The world's Covid crisis in fact facilitated much of this as there were surplus B747 aircraft available to be converted into freighters.

Atlas Air, UPS and Cargolux are the top three operators of Boeing 747 freighters, according to data from Spire Aviation.

The figures show that at the end of 2021, Atlas was operating 44 queens of the sky, UPS had 32 and Cargolux was operating 26 of the four-engine freighter.

The figures from Spire also show how the freighter kept on flying throughout 2021, while other four engine aircraft were grounded due to a lack of passenger demand.

In total, there were 304 B747Fs in operation by the end of 2021, up from 296 at the start of 2020.

A B747 can fit about 42 pallets of artillery shells or about 3,000 rounds. The photo below, from the U.S. Air Force, shows pallets on a cargo deck of a B747.



The USAF is working to replace its current fleet of presidential aircraft, two 747-200-based VC-25A aircraft delivered in



1991 (photo above), with two 747-8s originally built for Russian carrier Transaero, which filed for bankruptcy in 2015 before it could take delivery. The former commercial airliners

need extensive retrofits to be transformed into the VC-25B configuration.

The two VC-25B aircraft are scheduled to be delivered by Dec 2024.



The photo above, from Boeing, shows an artist impression of the new Presidential aircraft.

The new planes are some 18 ft longer than the present aircraft and will have an extra 1000 miles of range. But that's immaterial as the planes can be refueled in-flight.

The photo below shows work in progress on one of the new planes.







***SPEEDISTEVIE***

***PLAYLISTS***

**Remember  
Click 'a' Pic**



***GREATEST AUTOS***

***Subscribe Now . . .***



### Launch of Orion

SLS and Orion lifted off from Launch Complex 39B at Kennedy at 1:47 a.m. EST on Nov. 16, illuminating the night sky. An initial assessment showed the rocket performed with precision, meeting or exceeding all expectations during its debut launch.

Photo: NASA/Joel Kowsky.

### The Important Details:

*Speedi Wings & Wheels* is a free online magazine. The entire contents of each issue are © copyright. You may download, view, copy and print this publication subject to the following: (1) the Documents may be used solely for personal, informational, non-commercial purposes; and (2) and will not be copied or posted on any networked computer or broadcast in any media; and (3) the Documents may not be modified or altered in any way. Except as expressly provided above, you may not use, download, upload, copy, print, display, perform, reproduce, publish, license, post, transmit or distribute any information from this publication in whole or in part without the prior written permission of Speedi TV. Published by Speedi TV - 12 Cambridge Cottages, Richmond on Thames, TW9 3AY, UK - email: [speedimag@gmail.com](mailto:speedimag@gmail.com)

We are happy to accept photographs and articles by email at [news@speedi.tv](mailto:news@speedi.tv) with a view to including them in Speedi Wings & Wheels. However, all submissions are sent at the contributors own risk and Speedi Wings & Wheels will not be liable for any loss or damage, however caused. See also Privacy and Terms & Conditions on the Speedi Wings & Wheels [website](http://www.speedi.tv)

Editorial Team: North America Editor – Steve Wood    West Coast Contributors - Jim (Flybum) Pratt, Tim Sowell    Canada - Jim Swan    Cruisin' & Hot Rod's - Gary Rosier    UK Team - The Gremlins at Kew



## Editorial

Welcome to the December 2022 / January 2023 issue of *Speedi Wings & Wheels*.

Take a look at our 'Content's page to find out more about what's in this issue. The magazine is published bi-monthly during the last week of February, April, June, August, October and December.

In this issue we are featuring the Spruce Creek Toy Parade 2022 - Plus much more . . .

Take a look at the next page - the magazine index - for more details

Blue Sky's and Safe Flying.

*The Speedi Team*

*Speedi Wings & Wheels is a wide screen format magazine  
Best viewed in full screen single page HD mode*

Dec 7, 2022

The last Boeing 747 left the company's widebody factory in advance of its delivery to Atlas Air in early 2023. (Photo: Boeing)



# 8 *Spruce Creek Toy Parade - 2022*

Remember  
Click 'a' Pic



# Speedi Wings & Wheels

CONTENTS

**8 Spruce Creek Toy Parade 2022:** The Spruce Creek Toy Parade was back to its usual format in 2022. Gary Rosier went along to snap the action . . .

**17 NSRA SE Nationals:** NSRA held their SE Street Rod Nationals in Tampa between Dec 2 to 4, 2022. Gary Rosier was there to enjoy the show . . .

**33 Turkey Run Daytona - Pt 1:** The annual Turkey Run in Daytona was held at the Daytona International Speedway between Nov 24 & 27, 2022. Gary Rosier is a keen supporter of this charitable event. Here's the first part of his photo montage of this great event . . .

**42 Turkey Run Daytona - Pt 2:** Here's the second part of Gary Rosier's look at the 2022 Turkey Run . . .

## Regular Features:

**2 Speedi's Blog:** Steve Wood looks at 'what's hot and what's not' in the world of aviation

**7 AvNews:** Snippets of aviation related news

**21 News from the Barn:** News of the events & 'happenings' at Spruce Creek Fly-in.

**34 AutoNews:** Top titbits of Auto News

**39 Gone Cruisin':** Hot Rods & Cruisers and more . . .

**45 SpeediCity:** Fun and action from Daytona Beach



## Final Boeing 747 Airplane Leaves Everett Factory

- The final 747-8 Freighter will be delivered to Atlas Air in early 2023

- Iconic plane transformed global travel after entering service in 1970

EVERETT, Wash., Dec. 6, 2022

The last Boeing (NYSE: BA) 747 left the company's widebody factory in advance of its delivery to Atlas Air in early 2023.

"For more than half a century, tens of thousands of dedicated Boeing employees have designed and built this magnificent airplane that has truly changed the world. We are proud that this plane will continue to fly across the globe for years to come," said Kim Smith, Boeing Vice President and general manager, 747 and 767 Programs.

The 747 has played a key role in Boeing's history of aerospace leadership.

Production of the 747, the world's first twin-aisle airplane, began in 1967 and spanned 54 years, during which a total of 1,574 airplanes were built.

At 250 ft 2 in (76.2 m), the 747-8 is the longest commercial aircraft in service. At typical cruising speeds, the 747-8 travels roughly the length of three FIFA soccer fields or NFL football fields, per second.

The final airplane is a 747-8



Freighter. This model has a revenue payload of 133.1 tonnes, enough to transport 10,699 solid-gold bars or approximately 19 million ping-pong balls or golf balls. Here's a link to a Boeing video of the event: [Click here](#)



## Liftoff! NASA's Artemis I Mega Rocket Launches Orion to Moon

Nov 16, 2022

During Artemis I, NASA's new mega Moon rocket, the Space Launch System (SLS), roared into the night sky and sent the Orion spacecraft on a 1.4-million-mile journey beyond the Moon and back.

The uncrewed flight test was the first in a series of increasingly complex missions that will set the stage for the first woman and first person of color to step foot on the lunar surface, and for a long-term presence at the Moon that will enable future crewed missions to Mars.

Following a successful launch of NASA's Space Launch System (SLS), the most powerful rocket in the world, the agency's Orion spacecraft is on its way to the Moon as part of the Artemis program. Carrying an uncrewed Orion, SLS lifted off for its flight test debut at 1:47 a.m. EST Wednesday from Launch Pad 39B at NASA's Kennedy Space Center in Florida.

The launch is the first leg of a mission in which Orion is planned to travel approximately 40,000 miles beyond the Moon and return to Earth over the course of 25.5 days. Known as [Artemis I](#), the mission is a critical part of NASA's Moon to Mars exploration approach, in which the agency explores for the benefit of humanity. It's an important test for the agency before flying astronauts on the [Artemis II](#) mission.



## Splashdown! NASA's Orion Returns to Earth After Historic Moon Mission

Dec 11, 2022

NASA's Orion spacecraft for the Artemis I mission splashed down in the Pacific Ocean at 9:40 a.m. PST on Sunday, Dec. 11, after a 25.5 day mission to the Moon.

Splashdown was the final milestone of the Artemis I mission that began with a successful liftoff of NASA's Space Launch System (SLS) rocket Nov. 16, from Pad 39B at the Kennedy Space Center in Florida. Over the course of 25.5 days, NASA tested Orion in the harsh environment of deep space before flying astronauts on [Artemis II](#).

"The splashdown of the Orion spacecraft – which occurred 50 years to the day of the Apollo 17 Moon landing – is the crowning achievement of Artemis I. From the launch of the world's most powerful rocket to the exceptional journey around the Moon and back to Earth, this flight test is a major step forward in the Artemis Generation of lunar exploration," said NASA

Administrator Bill Nelson. "It wouldn't be possible without the incredible NASA team. For years, thousands of individuals have poured themselves into this mission, which is inspiring the world to work together to reach untouched cosmic shores. Today is a huge win for NASA, the United States, our international partners, and all of humanity."





Remember  
Click 'a' Pic







**Remember  
Click 'a' Pic**



**Remember  
Click 'a' Pic**







**Remember  
Click 'a' Pic**



Remember  
Click 'a' Pic





Remember  
Click 'a' Pic





**Remember  
Click 'a' Pic**







**Remember  
Click 'a' Pic**

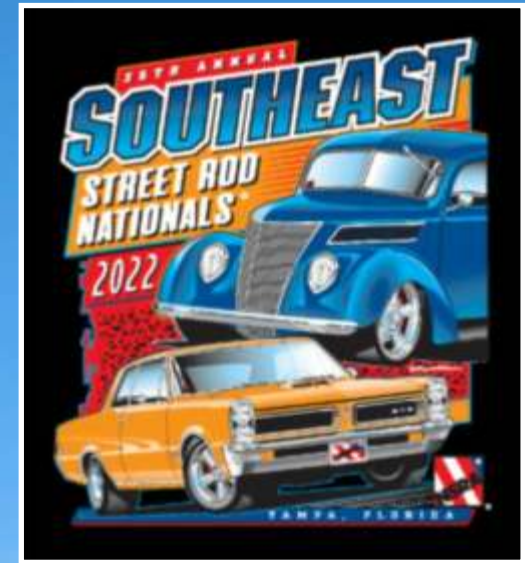


**Remember  
Click 'a' Pic**



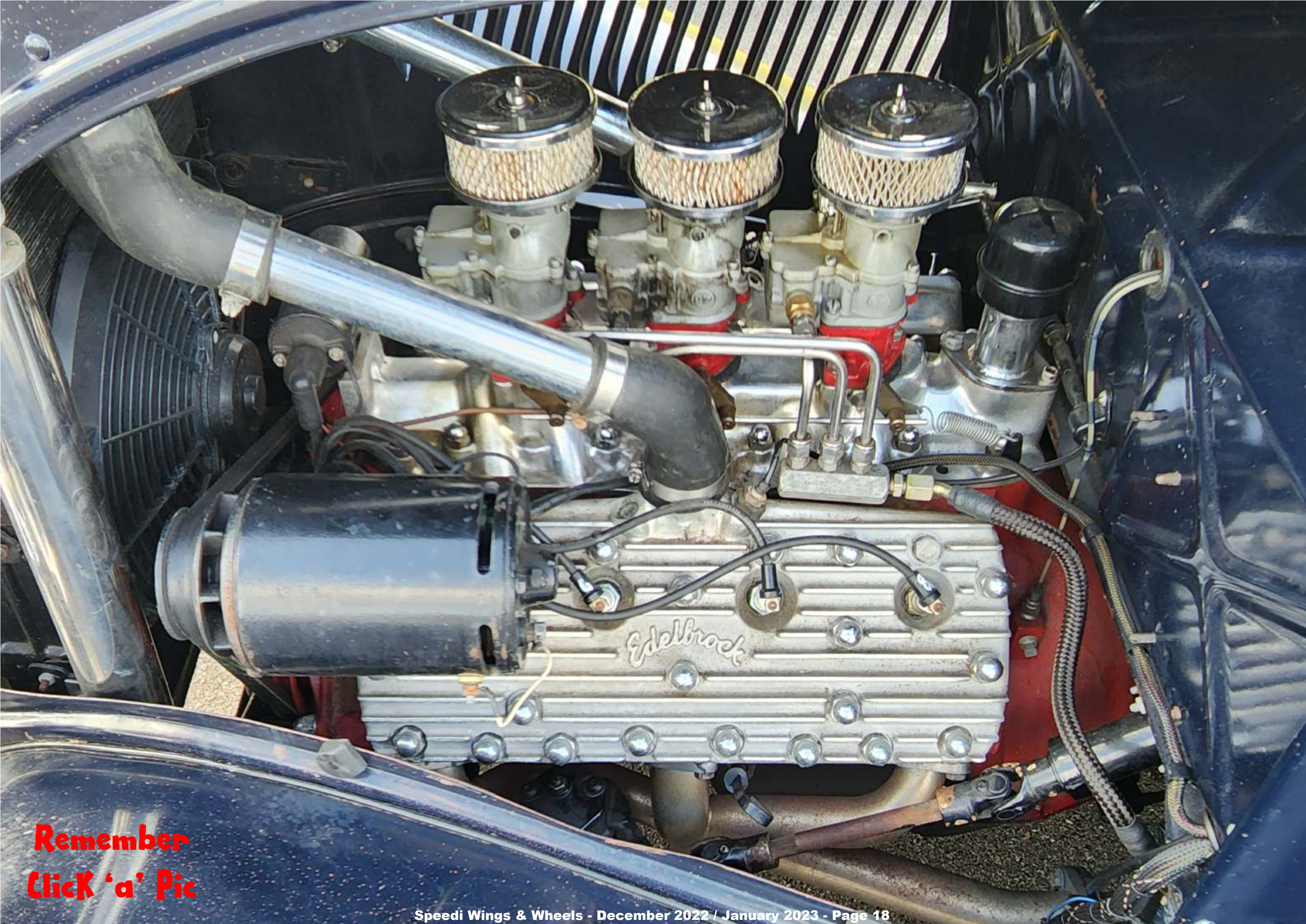


Remember  
Click 'a' Pic



Photos by Gary Rosier





**Remember  
Click 'a' Pic**



Remember  
Click 'a' Pic







Remember  
Click 'a' Pic





**N**EW FROM THE Barn is a regular feature about the happenings at the largest (and greatest) fly-in community in the world - Spruce Creek Fly-in. Situated on the Space Coast of Florida, just 7 miles south of the famous Speed City of Daytona Beach, Spruce Creek is a very special place. Our North America editor, Steve Wood, has lived there for since 2001, so he should know. We hope you enjoy this regular feature about a very special aviation community.

Spruce Creek Airport Information - Courtesy of the Spruce Creek POA Website - [www.scpoa.com](http://www.scpoa.com)

The Spruce Creek Airport is the heart of the Spruce Creek Fly-In Community. The Airport is a private airport owned and operated by the Spruce Creek Property Owners Association (SCPOA). The Spruce Creek Airport Authority Committee through the SCPOA Board of Directors has the authority and the responsibility to oversee the operation of the Spruce Creek Airport. The SCPOA employs a full time, 24-7 security staff. The Airport runways, taxiways and aircraft parking areas are regularly patrolled and are under continuous video surveillance by the Security staff 24 hour a day.

All flying activities at the Spruce Creek Airport are regulated by the FAA and by the recommended procedures published in the Aeronautical Information Manual (AIM). In addition, a limited number of local rules and procedures have been established to promote a safe and enjoyable airport. All resident, tenants and invitees are encouraged to cooperate and abide by these procedures.

**SPRUCE CREEK AIRCRAFT ARRIVAL & DEPARTURE PACKAGE** - The airport management provides information to assist all pilots operating in and out of the Spruce Creek Air, viewed or printed with Adobe Reader. [Download PDF](#)

Here's a link to Spruce Creek Airport (7FL6) web page - click [here](#)

**AIRPORT SAFETY VIDEO** – The airport management recommends that all Spruce Creek Fly-In residents and airport users view this very good airport safety video. Click [here](#)

TEL ..... 386/760-5884 or Airport Manager cell see below.

FAX ..... 386/761-7808 AFTER 1700 ..... 386/756-6125 (Security)

VORTAC OMN .....112.6 MHz 165°R/13.9 DME

VORTAC ORL ..... 112.2 MHz 020°R/35.6 DME

FSS St. Petersburg ..... 122.2 MHz

APCH CNTRL Daytona Beach ...125.35 MHz (South) 125.8 MHz (North)

INSTR APCH (Rwy 06) ..... GPS (Private, Residence Only)

Runways: ..... 06 / 24 - 4000 ft x 150 ft

CTAF..... 122.725 MHz (pilot actuated lights 3-5-7 clicks)

AWOS..... 121.725 MHz

FUEL ..... 100LL & JET A (self serve and truck delivery)

FUEL ..... 386 257-7791 (on field) or 129.925 MHz (forward request to Spruce Creek)

Airport Manager - Jim Stone ... 386 275-1894





IN OUR 'NEWS from the Barn' section we will be featuring news and photos from Spruce Creek Fly-in, the world's greatest aviation community. With over 1600 homes, and not all of them are hangar homes, and home to over 3000 people, there are over 650 airplanes based at Spruce Creek. But it's not all about aviation at Spruce Creek - there's golf, tennis, motorcycling and much more, as well as a Country Club and the Downwind restaurant right alongside Beech Boulevard - a major taxiway in the center of the airport. EAA Chapter 288

(Daytona Beech) meets at Keith Phillip's hanger on the other major taxiway - Cessna Boulevard. Then there's the Gaggle Flight, which is quite something in its own right. Every Saturday morning (and sometimes on Wednesday too) members of the Gaggle Flight meet at The Big Tree which sits right in the middle of the airport. Upwards of 30 aircraft depart in flights of 3 or 4 (and sometimes more) flying out to breakfast. The arrivals back are usually spectacular, with overhead breaks the norm. Our North America editor, Steve Wood, is part of Goofy Flight - named

after his GlaStar which has the special registration N-600FY. Steve even has 'goofy' smoke on his airplane which can 'puff' or be continuous at whim.

Everyone has great fun at Spruce Creek Fly-in which perhaps explains why there's a sign inside the main entrance which reads *Caution - Children And Adults At*



Remember  
Click 'a' Pic





**Remember  
Click 'a' Pic**







**Remember  
Click 'a' Pic**





**Remember  
Click 'a' Pic**





**Remember  
Click 'a' Pic**





**Remember  
Click 'a' Pic**





**Remember  
Click 'a' Pic**





**Remember  
Click 'a' Pic**







**Remember  
Click 'a' Pic**





**Remember  
Click 'a' Pic**





**Remember  
Click 'a' Pic**



Remember  
Click 'a' Pic



Photos by Gary Rancier



**Remember  
Click 'a' Pic**







**Remember  
Click 'a' Pic**



Remember  
Click 'a' Pic





## As blue as the sea, as stunningly white as the beach: the MINI Convertible in the Seaside Edition

To mark the 30th anniversary of the sporty open-top MINI four-seater, the MINI Convertible now appears in the Seaside Edition with exclusive design and equipment features, optionally in the body colours Caribbean Aqua and Nanuq White.

Munich - 21.12.2022

Waves rolling gently onto the beach and the endless horizon in view – a day at the seaside offers refreshingly expansive perspectives and a feeling of freedom. In line with this, the MINI Convertible in the Seaside

Edition celebrates 30 years of individual style and maximum fresh-air driving fun. To mark the anniversary of the open-top four-seater, MINI now presents the sporty classic with exclusive equipment and design features – optionally in a shimmering blue Caribbean Aqua paint finish or in the light Nanuq White bodycolor.

The Seaside Edition of the MINI Convertible is available as the Cooper (combined fuel consumption: 6.4 – 5.9 l/100 km;

combined CO2 emissions: 145 – 135 g/km according to WLTP) and the Cooper S (combined fuel consumption: 6.9 – 6.5 l/100 km; combined CO2 emissions: 157 – 148 g/km according to WLTP).

Currently the world's only premium convertible in the small car segment and with an impressively distinctive look in traditional brand style, the MINI Convertible embodies individual open-air driving pleasure. In the MINI Cooper S, a 2.0-litre, 131 kW/178 hp 4-cylinder power

Convertible will accentuate this stylish model's hallmark features with an edition-specific design in the exterior and interior. Double decorative stripes in white run from the side doors to the rear of the vehicle, and the exclusive exterior design is rounded off with a unique graphic on the front apron, where a stylised 30 once again refers to the model's anniversary.

This contrasts elegantly with the maritime-inspired paint finish Caribbean Aqua, emphasising the

sporty character of the open-top four-seater. In the Nanuq White finish, the consistently light-coloured bodywork has a particularly elegant appeal: here the MINI Convertible is reminiscent of spotted clouds against a deep-blue summer sky.



unit with MINI TwinPower Turbo Technology enables acceleration from a standstill to 100 km/h in 7.2 seconds. The MINI Cooper also provides typical MINI go-kart feeling, featuring a 3-cylinder petrol engine with an output of 100 kW/136 hp. The black, electrically operated soft top takes things at a more leisurely pace: it can be opened or closed automatically up to 30 km/h.

From February 2023, the limited Seaside Edition of the MINI

For the driver, the latest generation of the MINI operating system optimises quick and intuitive control of the vehicle functions, audio programme, communication, navigation and apps, while newly compiled equipment packages enable specific individual preferences to be fulfilled in terms of driver assistance and connectivity.

## The new Porsche 911 Dakar

17/11/2022

Porsche is celebrating an extraordinary world premiere at the Los Angeles Auto Show: the new Porsche 911 Dakar is just as comfortable off-road as it is on the highway.

The exclusive model, limited to 2,500 units, not only shows that there are hardly any limits to the concept of the Porsche 911. It also evokes the first overall victory by Porsche in the 1984 Paris-Dakar Rally, which was simultaneously the birth of all-wheel drive in the Porsche 911. This is why the new 911 Dakar is also offered with an optional Rallye Design Package, reminiscent of that iconic winning car.

The first striking detail of the Porsche 911 Dakar is its ground clearance, which is 50 millimetres higher than that of a 911 Carrera with sports suspension. And the standard lift system can raise the front and rear ends an additional 30 millimetres. Its ground clearance and ramp angle rival those of conventional SUVs. The lift system is not only used to slowly cross obstacles, but is an integral part of the retuned chassis. The 'high level'

setting is available for ambitious off-road adventures at speeds of up to 170 km/h. Above that speed, the car automatically lowers back down to its normal level.

Complementing the car's sporty off-road attributes are specially developed Pirelli Scorpion All Terrain Plus tyres (sized 245/45 ZR 19 at the front and 295/40 ZR 20 at the rear). The chunky tread pattern is nine millimetres deep and the reinforced sidewalls and the threads consist of two carcass plies. All this makes the tyres of the Porsche 911



Dakar ideal even for challenging terrain and they are highly cut-resistant. Pirelli P Zero summer and winter tyres are available as an option, also with two carcass plies. But the all-terrain tyres come as standard and offer sports car dynamics on the road as well.

### Commanding power on all surfaces

The three-litre biturbo six-cylinder with 480 PS (353 kW, 911. The new sports car sprints to 100 km/h in 3.4

seconds; due to the all-terrain tyres the top speed is limited to 240 km/h.

As standard, the engine comes with an eight-speed PDK and Porsche all-wheel drive. The standard equipment also includes rear-axle steering, the engine mounts from the 911 GT3, and PDCC anti-roll stabilisation. The interplay of all the components results in the 911 Dakar being just as dynamic on sand and loose surfaces as it is on the Nürburgring Nordschleife.

Maximum off-road performance is also ensured by two new driving modes, which can be selected using the rotary switch on the steering wheel. Rallye mode is ideal for loose, uneven surfaces and features rear-focused all-wheel drive. In Offroad mode the high clearance is activated

automatically. This mode is designed for maximum traction on difficult terrain and on sand. Both of the new driving modes also feature the new Rallye Launch Control, which enables impressive acceleration on loose surfaces and allows wheel slippage of around 20 per cent.

At the heart of the optional Rallye Design Package from Porsche Exclusive Manufaktur is a two-tone paint finish in White/Gentian Blue Metallic.



## LIMITED EDITION FORD GT MK IV IS THE ULTIMATE TRACK-ONLY FORD GT, UNCONSTRAINED FOR EXTREME PERFORMANCE

\* As the final track-only model, the 2023 Ford GT Mk IV goes all-in to deliver the Ford GT's highest-levels of performance, handling and advanced technology thanks to its unique engine and transmission, aerodynamic design and chassis with longer wheelbase

\* 2023 Ford GT Mk IV features a specially engineered twin-turbo EcoBoost engine targeting more than 800 horsepower, race transmission, carbon fiber "long tail" body, plus Multimatic's Adaptive Spool Valve (ASV) suspension

\* Now available to apply to order from Multimatic with production limited to 67 hand-built supercars – a number honoring the original 1967 GT Mk IV race car

DEARBORN, Mich., Dec. 9, 2022

Representing the ultimate and most extreme track only Ford GT ever, the new Ford GT Mk IV by Ford Performance and Multimatic is a radically advanced supercar delivering max performance with its unique body, powertrain and suspension.

To deliver unconstrained performance, exceeding that of any Ford GT to date, the Ford GT Mk IV

has a unique twin-turbo EcoBoost engine, racing transmission, aero-focused exterior design, and chassis with longer wheelbase for greater on-track handling.

"The original GT Mk IV held nothing back for max track performance, and the new Ford GT Mk IV brings it in the same way," said Mark Rushbrook, global director, Ford Performance Motorsports. "With an even higher-level of motorsport engineering and performance, plus a completely new carbon fiber body that is functional and striking, the Mk IV is the ultimate sendoff of the third-generation supercar."

The new Ford GT Mk IV nods to the year that the original Mk IV won the 24 Hours of Le Mans, with just 67 of the hand-built supercars to be produced at Multimatic's facility in Markham, Ontario. A new client application process (<https://www.ford.com/performance/gt/mk-iv/>) will begin for this \$1.7M supercar (starting MSRP), with client selections confirmed in the first-quarter of 2023. Deliveries will begin in late spring 2023.

"Multimatic's brief was to create the most extreme final version of the Ford GT, and the Mk IV is the outcome," said Larry Holt, executive vice president, Multimatic Special Vehicle Operations Group. "A unique larger displacement engine, proper racing gearbox, stretched wheelbase and truly radical body has



resulted in an unprecedented level of performance. We are proud to have been a part of the third-generation GT from its inception to this amazing swan song and consider it a significant chapter in Multimatic's history."

Ford GT Mk IV has a history of technological advances Building on Ford GT Mk II's triumphant 1966 1-2-3 Le Mans finish, Ford's development team held nothing back and redesigned the car from scratch with state-of-the-art technology and engineering available to create the 1967 Ford GT Mk IV.

To leverage new material science advantages, Ford's engineers and Kar Kraft developed a new lightweight chassis using adhesive bonded honeycombed-aluminum construction with a more aerodynamic body and named it the "J-Car" because it was built to the new FIA Appendix J rules. Combined with the famous 427 Ford V-8 (7L) engine and a special transaxle with its own cooling system that carried power to the rear wheels the 1967 Ford GT Mk IV was 9-inches longer and built specifically to dominate global endurance racing.

## BUGATTI DELIVERS THE TENTH – AND FINAL – CENTODIECI HYPER SPORTS CAR

MOLSHEIM - 19 12 2022

THE TENTH AND FINAL CENTODIECI, A MODERN-DAY TRIBUTE TO BUGATTI'S LEGENDARY EB110 SUPER SPORTS CAR, IS NOW WITH ITS OWNER, BRINGING TO AN END A SIGNIFICANT CHAPTER IN THE MODERN ERA OF BUGATTI COACHBUILDING.

Christophe Piochon, president of bugatti automobiles, commented: "the Centodieci1 brings together all of the components of the bugatti brand into one extraordinary package: rarity, innovation, heritage, craftsmanship and incomparable performance. the entire limited production run of ten was so sought after by our customers that it was sold out before the Centodieci had even been officially revealed. now, we're delighted to see that the final example has been delivered to its new owner following the intensive development, testing and bespoke creation process necessary to create a product as significant and rare as Centodieci.

"This car was conceived to honor a model that we see as spiritually marking the beginning of a trilogy: the EB110 established the formula for the Veyron and the Chiron2.

Although separated by decades, these cars are timeless in their appeal and united in their dedication to shifting expectations of performance and ability. We now close this chapter of our coachbuilding era started with the Divo3 in 2018, but the legend of the EB110 and Centodieci will forever remain a part of Bugatti history."

The Bugatti design and engineering teams reimaged the EB110's silhouette by creating an entirely new roofline and profile, with a front that sits much lower and a new frontal visual identity inspired by the EB110's understated Bugatti



horseshoe grille. The original car's Bauhaus-inspired flat surfaces and details are reborn on Centodieci with a play of light and shadow with only gentle curves, while the slab-shaped headlights of EB110 evolve into cutting-edge slimline LED headlights – a bespoke development just for this project.

The last of 10 hand-built units, this Centodieci contrasts a Quartz White exterior with a Black Carbon finish across the lower body and Black Matt grilles. The brake calipers – in Light Blue Sport – as well as Light Blue Sport finishing for the logo on

the Black Carbon rear wing, establish a deep connection with the EB110, reimagining the famous shade of Bugatti Blue that the car was introduced and produced in.

The interior of the tenth coachbuilt Centodieci also features a Light Blue Sport leather finish. The seats, roof liner, door panels, center console and floor mats are crafted in a symmetrical quadrate-like pattern, elevated for the Centodieci in a bespoke form that's befitting for a contemporary coachbuilt hyper sports car.

Like Bugatti's original super sports car of the 1990s, the Centodieci is a complete high-performance tour-de-force. It has at its core the iconic Bugatti 8.0-liter W16 engine producing 1,600 PS, ensuring the Centodieci accelerates from 0 to 100 km/h in 2.4 seconds. Top speed is 380 km/h. Bugatti's

chassis and suspension engineers worked extensively to hone and perfect the hyper sports car's handling capabilities to produce a unique driving experience.

With all ten examples of the Centodieci now completed and delivered, the Bugatti Atelier in Molsheim will focus on assembling the remaining Chiron models, of which less than 100 of the total 500 remain, followed by the limited run of 99 W16 Mistral4 examples and 40 of the track-only Bolide5. Every build slot of each car is fully accounted for.



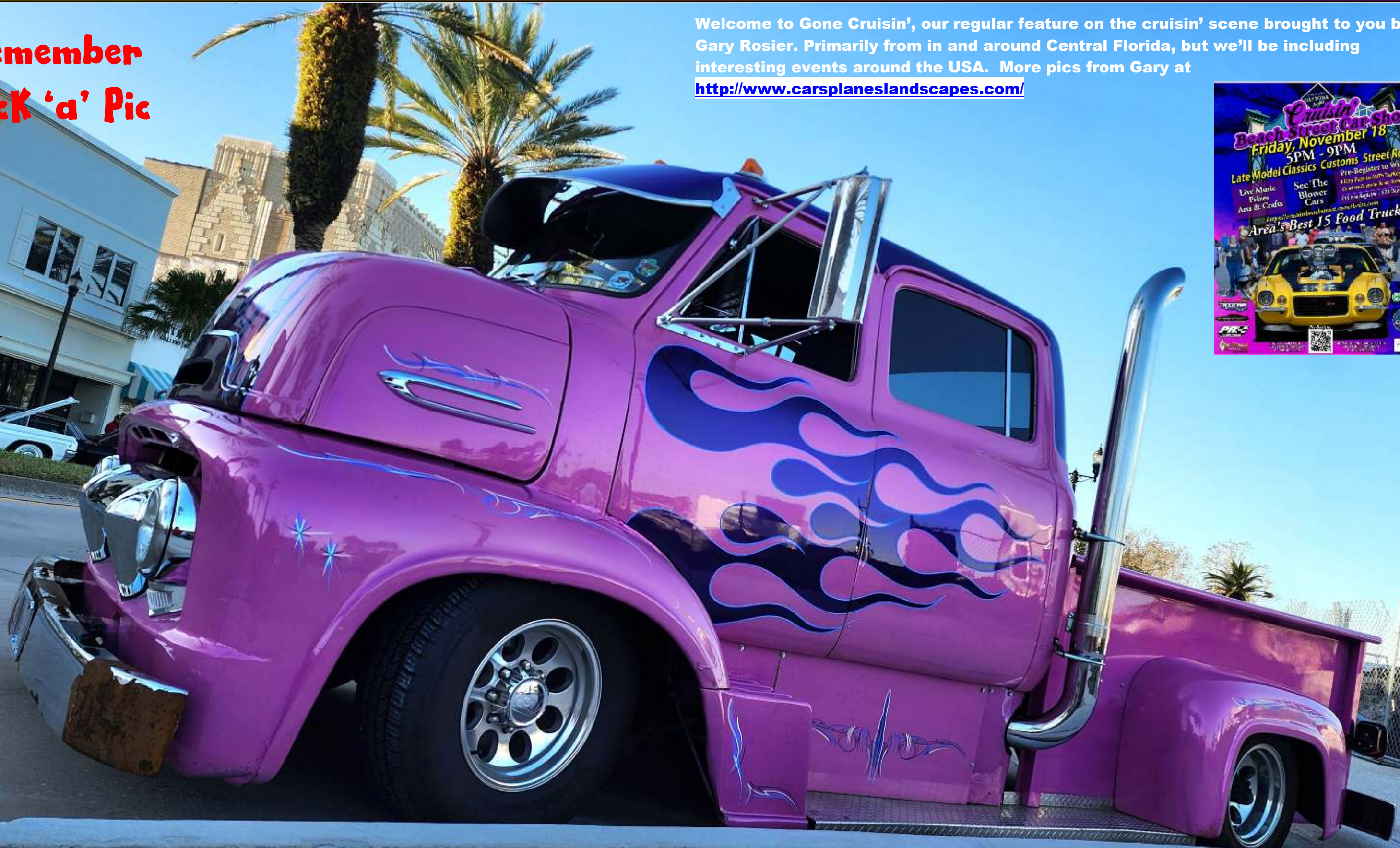
# GONE CRUISIN'

Gary's Hot Rods & Cruisers



Remember  
Click 'a' Pic

Welcome to Gone Cruisin', our regular feature on the cruisin' scene brought to you by Gary Rosier. Primarily from in and around Central Florida, but we'll be including interesting events around the USA. More pics from Gary at <http://www.carsplaneslandscapes.com/>





Remember  
Click 'a' Pic





**Remember  
Click 'a' Pic**





***MORE FROM THE TURKEY RUN...***



***Remember  
Click 'a' Pic***

Photos by Gary Rosier



**Remember  
Click 'a' Pic**

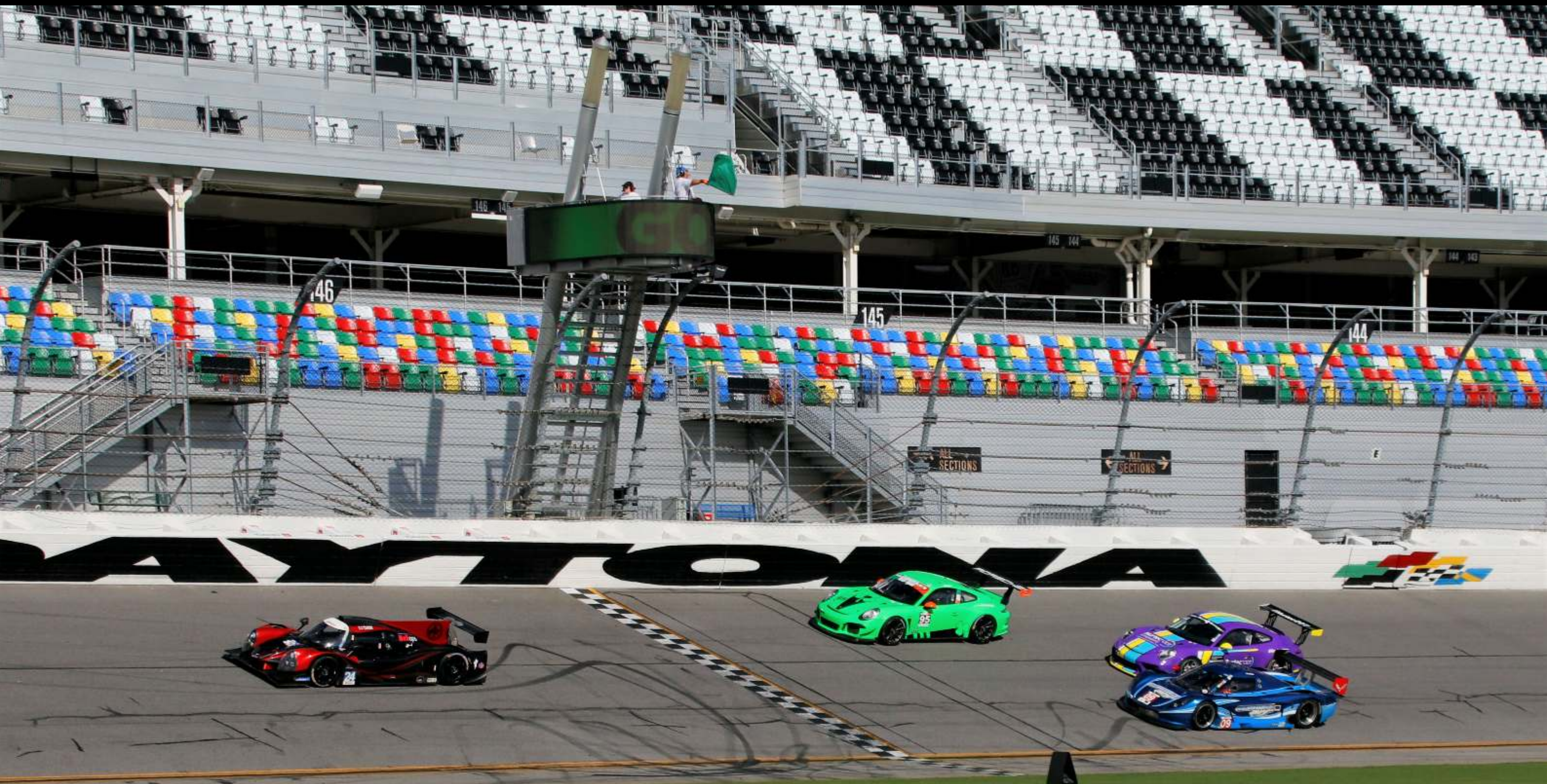




Remember  
Click 'a' Pic



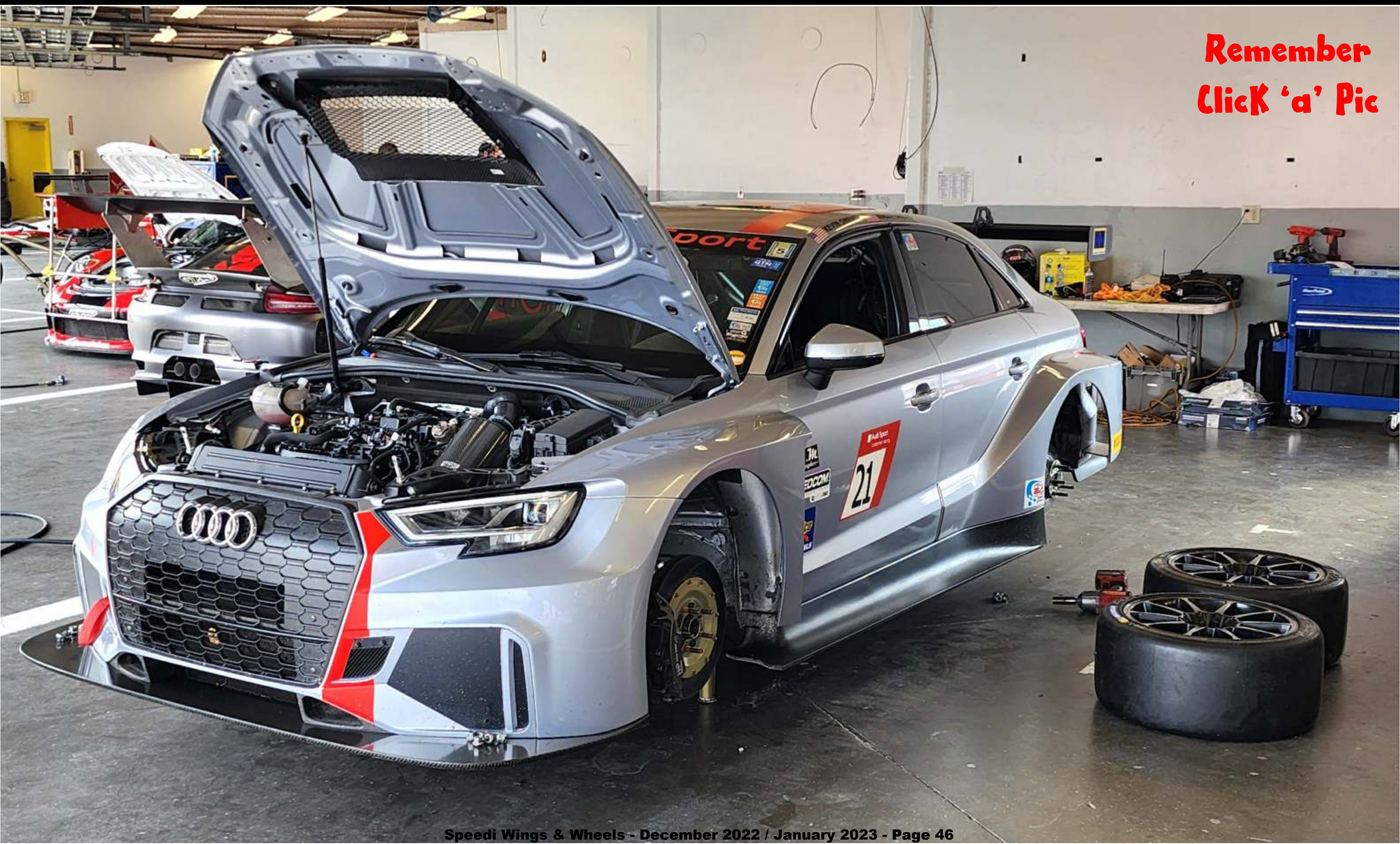




Photos by Gary Rosier



**Remember  
Click 'a' Pic**





**Remember  
Click 'a' Pic**





# Speedi

Wings & Wheels

[www.speedi.tv](http://www.speedi.tv)

THE NEXT ISSUE OF SPEEDI WINGS & WHEELS FEATURES THE ROLEX 24 HR  
AS WELL AS MUCH MORE AVIATION AND MOTORSPORT ACTION

BOOKMARK OUR WEB ADDRESS - [WWW.SPEEDI.TV](http://WWW.SPEEDI.TV) - SPREAD THE WORD



FREE!  
Online  
Magazine